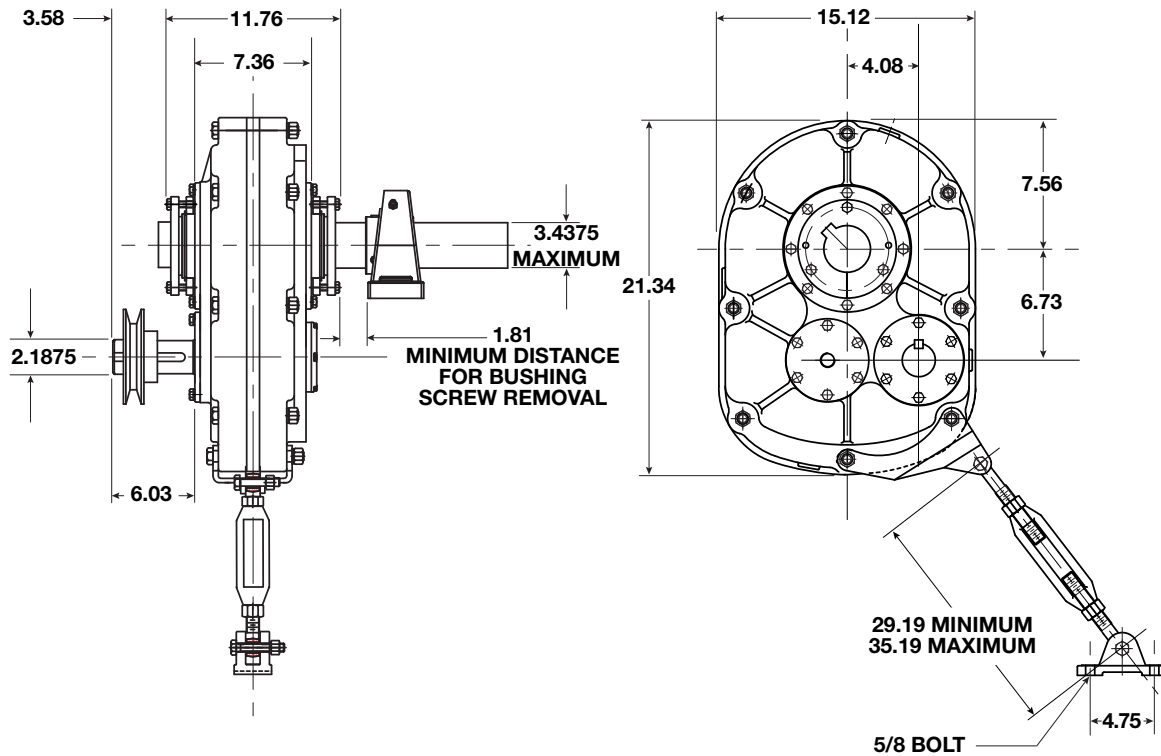




# VXT6 XD Dimensions

All dimensions listed in inches



## Output Hub Tapered Bushings (Other bushing sizes available by special order)

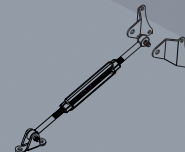
Bushing Kit Number (bore diameter)	Shaft Keyseat Required (inches)	Weight (lbs)
XBK6 2-1/2*	5/8 x 5/16 x 10-11/16	14.0
XBK6 2-11/16*	3/4 x 3/8 x 10-11/16	12.9
XBK6 2-7/8*	3/4 x 3/8 x 10-11/16	12.2
XBK6 2-15/16*	3/4 x 3/8 x 10-11/16	11.6
XBK6 3*	3/4 x 3/8 x 10-11/16	11.3
XBK6 3-7/16	7/8 x 7/16 x 10-11/16	9.0

\*Check the driven shaft and key for adequate load capacity.

## XD Style Speed Reducer (AGMA Size 307)

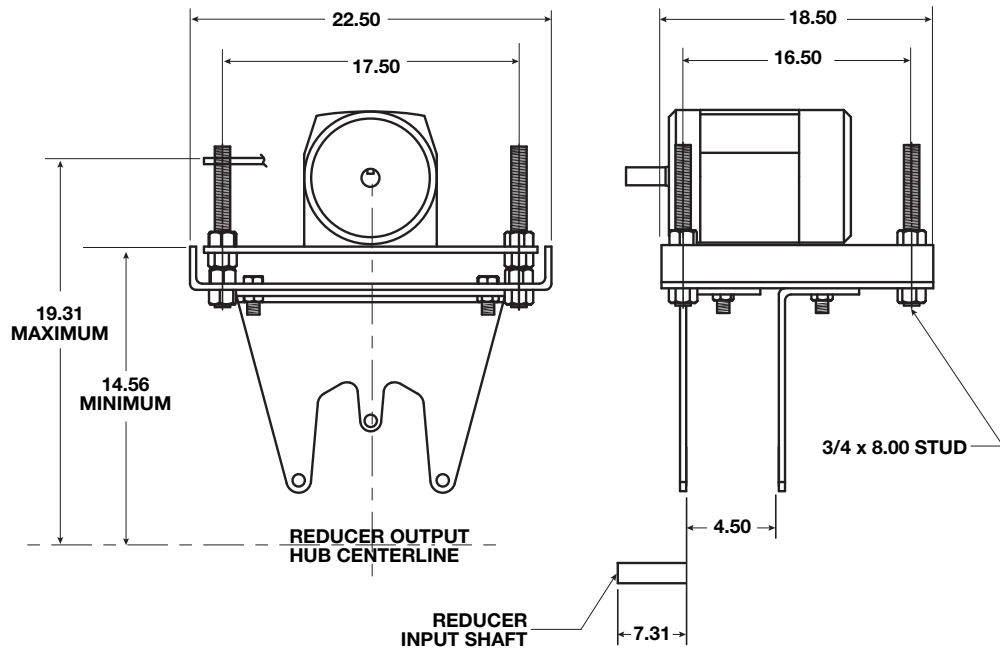
Reducer Unit	Exact Ratio	Maximum Output RPM	Weight (lbs)
VXT615 XD	15.33:1	125	263.0
VXT625 XD	25.14:1	80	263.0

## Included Torque Arm



Torque Arm Kit Number	Weight (lbs)
6TA	23.0

# VXT6 XD Accessories



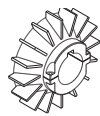
Motor Mount Kit Number	NEMA Motor Frame	Weight (lbs)
6MMA	143T-326T	99.0

	V-Belt Center Distance for NEMA Frame Motors					
	140	180	210	250	280	320
Minimum	25.9	26.9	27.6	28.6	29.4	30.4
Maximum	29.7	30.7	31.4	32.4	33.2	34.2



**Backstop**

6BKS



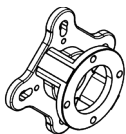
**Cooling Fan Kit**

6CFK



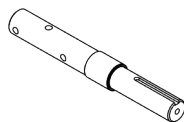
**Component Replacement Repair Kit**

6RK



**Screw Conveyor Flange**

6SCF



**Screw Conveyor Drive Shaft**

6SCDS

**Output Shaft Diameter Options (in)**

1-1/2

2

2-7/16

3



**Screw Conveyor Shaft Removal Wedge**

6SCRW

